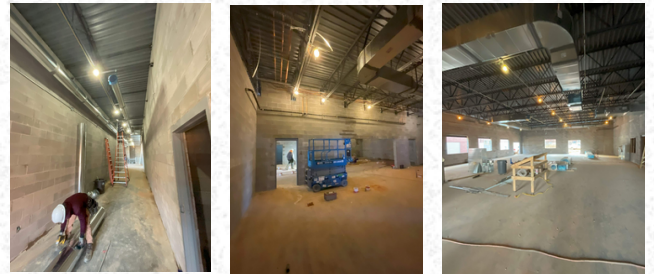


NEW MCEWEN HIGH SCHOOL UPDATE

NEW 9-12 BUILDING UPDATES

- Metal deck attached to steel joists in majority of one-story portion of building.
- Plumbing, electrical, and mechanical line installation in progress.
- Vertical exterior wall construction for Ag Shop complete with temporary bracing and brick ties for upcoming brick installation.
- Vertical interior wall construction in progress around classroom wing.
- Plumbing lines in place for special education restroom and laundry.
- Horizontal joint reinforcement in place for tying in future interior walls.
- Overall progress on utility trenches, footings, foundation walls, pouring of floor slabs, construction of vertical walls, setting of joists, metal roof deck, and mechanical unit curbs.



6-8 BUILDING ADDITION

- Brick delivered to site.
- Some brick installation on exterior walls.